

**MAINSTREAMING CLIMATE
CHANGE / VARIABILITY
INFORMATION IN THE POLICIES
FOR ADAPTATION IN AFRICA:**

‘LESSONS FROM ICPAC/ IGAD’

L.A.OGALLO

**IGAD Climate Prediction and
Applications Centre (ICPAC)/IGAD**

MAINSTREAMING OF CLIMATE RISK IN IGAD

- **ICPAC IS AN IGAD INSTITUTION + 3 Other no IGAD member countries**
- **ICPAC formally DMCCN: inherited from WMO**

EXAMPLES for IGAD : Is establishing a Regional Centre of excellence CLIMATE RISK REDUCTION

• REGIONAL COOPERATION

• Peace, and security

• Agriculture and Food Security

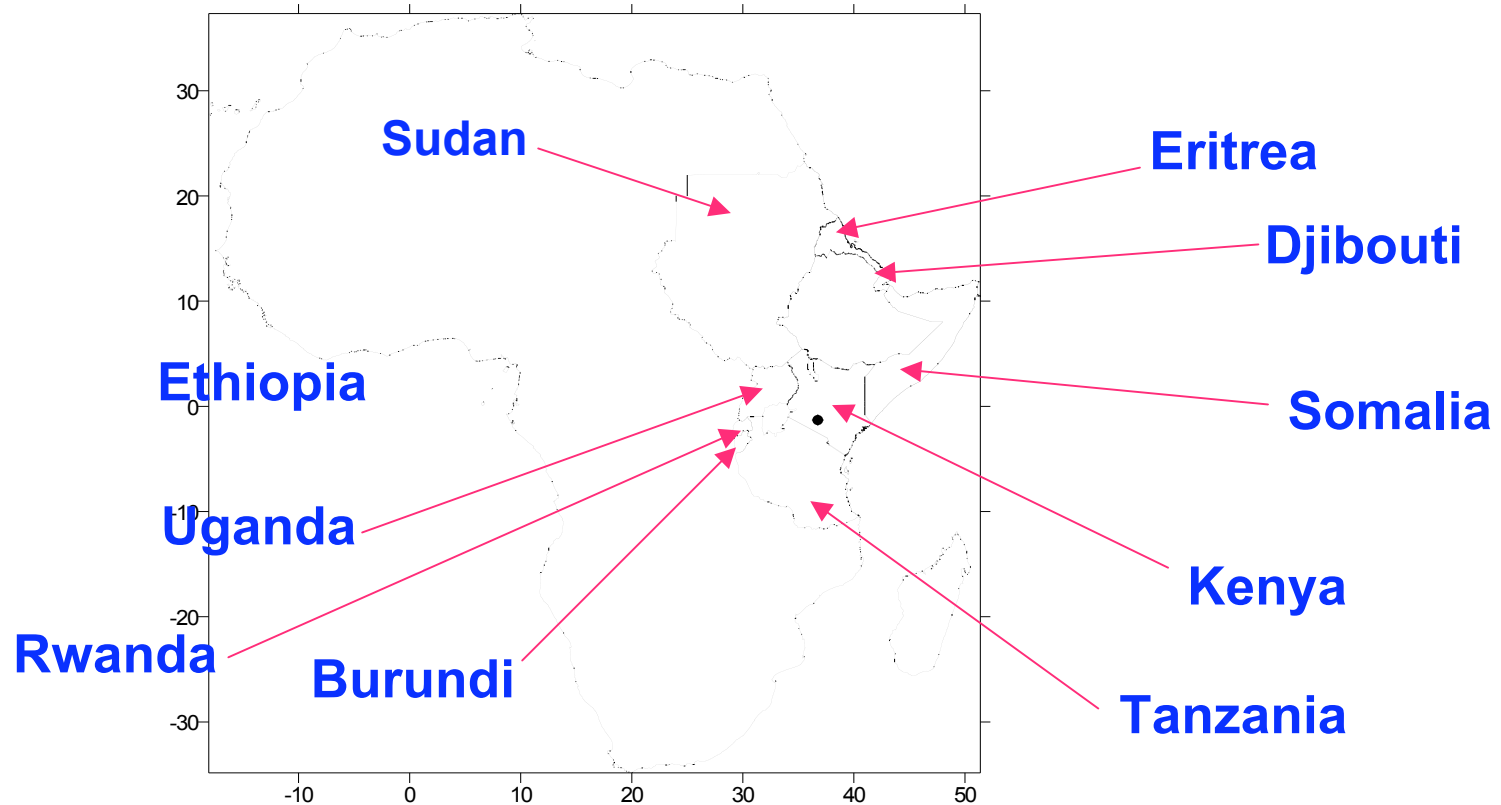
• Environmental protection (air, land and water resources)

• Economic cooperation and integration

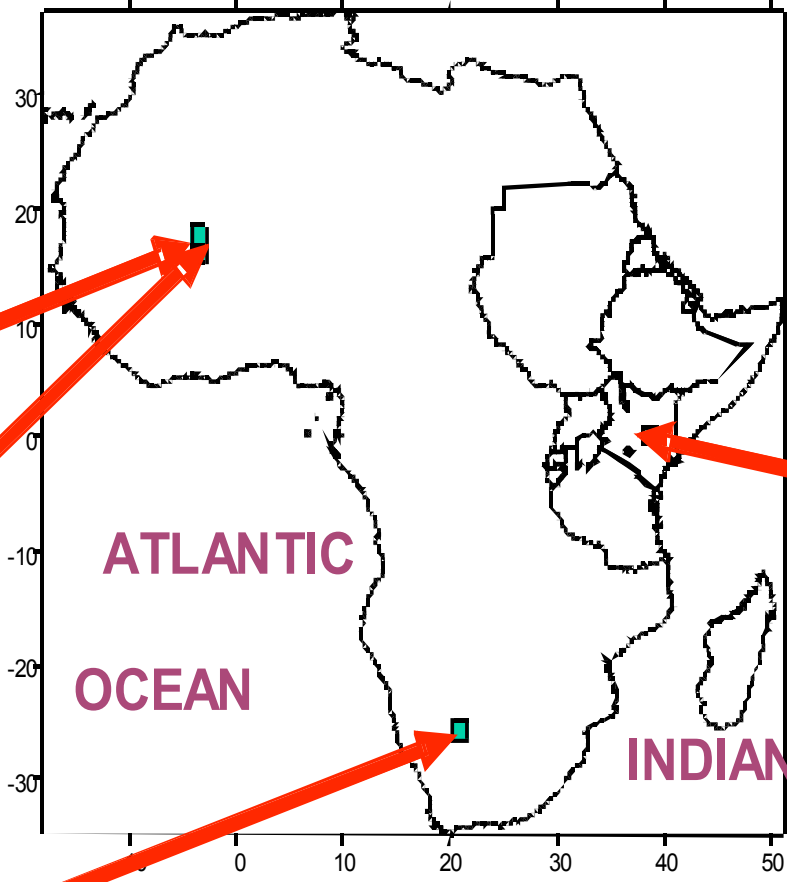
• CLIMATE EXTREMES THREATEN ALL AND HENCE ICPAC ESTABLISHMENT

IGAD Climate Prediction and Applications Centre (ICPAC)/IGAD-7

IGAD MEMBERS AND 3 NON IGAD MEMBERS (NMHSs Core of management board)



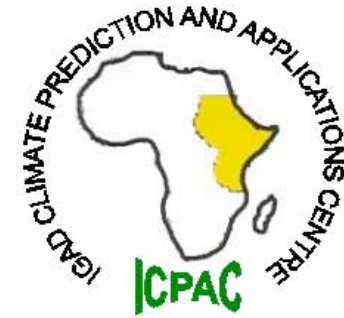
MAJOR AFRICAN CLIMATE AND APPLICATION CENTRES



NIAMEY,
ACMAD

AGRHYMET
NIAMEY,

DMC/SADC



ICPAC/IGAD



**HISTORY RUNNING
BACK TO 1989 + NMHSs**

LESSONS AND EXPERIENCES

- **CLIMATE INFORMATION-** Do we have credible information to be shared at regional/ national, local (vulnerable) levels?. If yes why does climate extremes continue threaten all livelihoods in Africa ? Availability of FUTURE climate information?
- **Climate information Delivery systems**
- **Translation of climate information into sector specific risks** (Sector experts).
- **Users Capacity and attitudes**
- **Policies and their implementations**
- **Capacity enhancement in all areas**
- **Resources availability**
- **Partnerships and collaborations**

CLIMATE INFORMATION

- **Do we have credible information to be shared at regional/ national, local (vulnerable) levels?.**
- **we have some useful climate information at most NMHSs and ICPAC**

Regional center of excellence (Regional climate risk challenges)

- **DEPENDENCE ON WMO SYSTEM AND MANY PARTNERS (Standards; ethics; donors confidence, etc)**
- **Research: Generate and management of regional Knowledge**
- **Capacity building**
- **Networking for sharing operational products**
- **Forum for Universities, ... Collaborations**

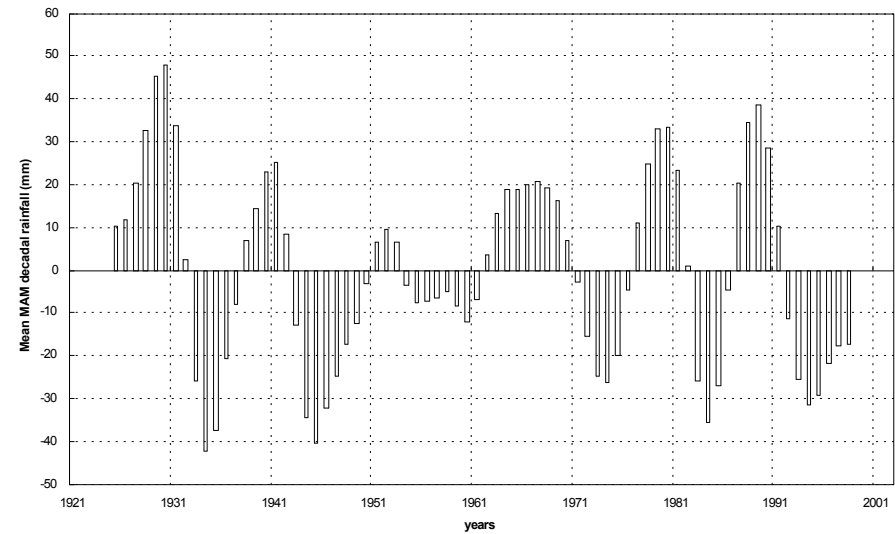
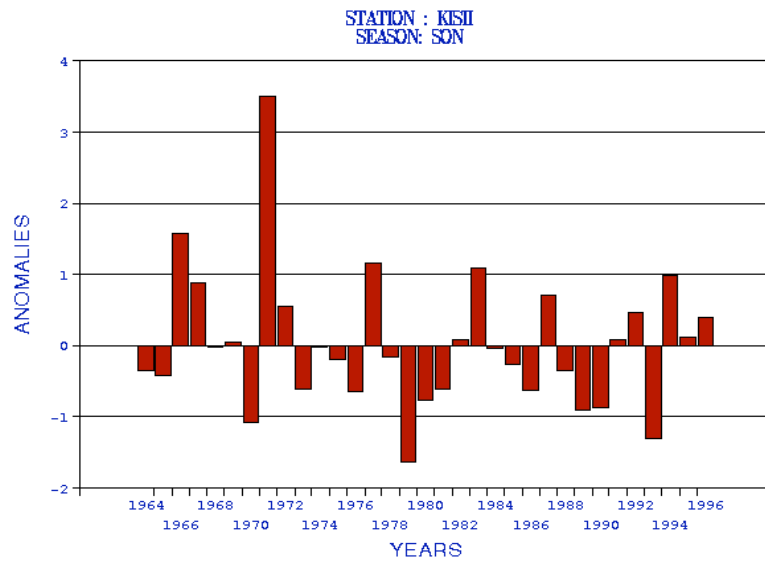
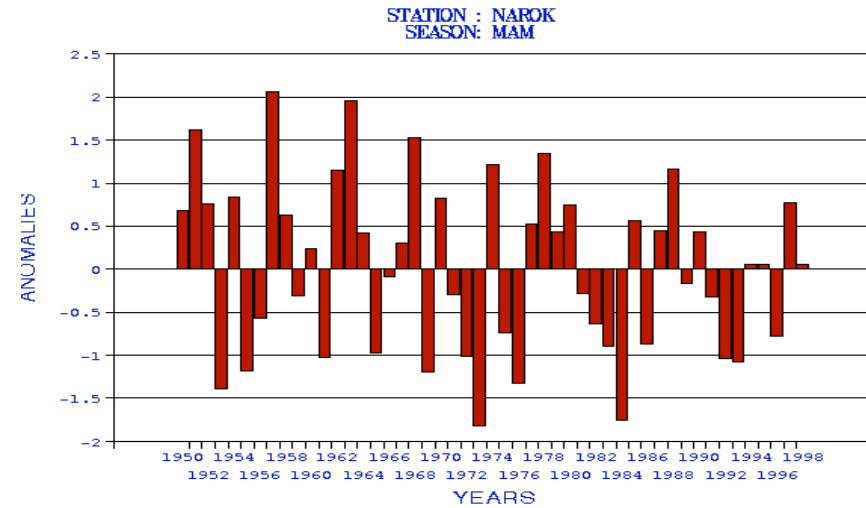
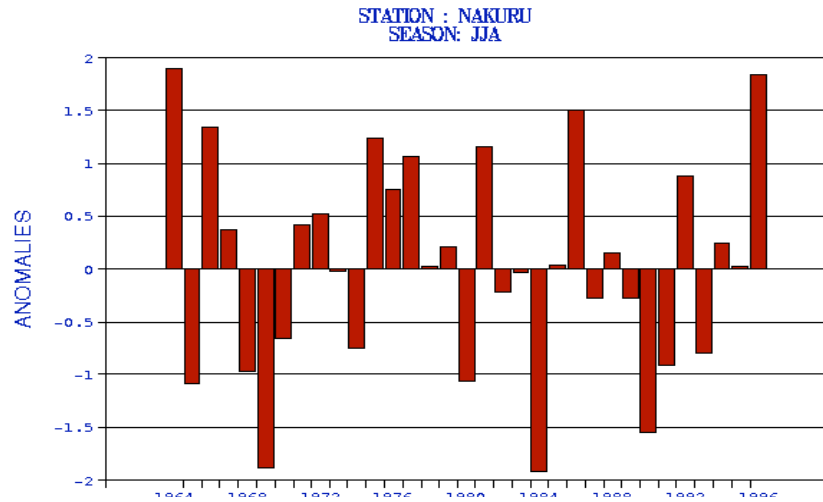
ICPAC EXPERIENCES

- **Observations; Data base and their management:** all types of data including space based and output from advanced models
- **Modeling , prediction and early warning capacity**
- **Down scaling climate information to regional/ local levels including climate change scenarios**
- **Human resources and technology**
- **Funding issues**
- **Partnerships: avoid duplications**
- **Guarantee for New Generation?**

**OTHER KEY CHALLENGES IS
EXTREMES IN CLIMATE ?**

**CLIMATE EXTREMES ARE
BECOMING MORE FREQUENT
AND GIGANTIC**

KEY Challenges EXPOSURES AND VULNERABILITY



DECADAL VARIABILITY

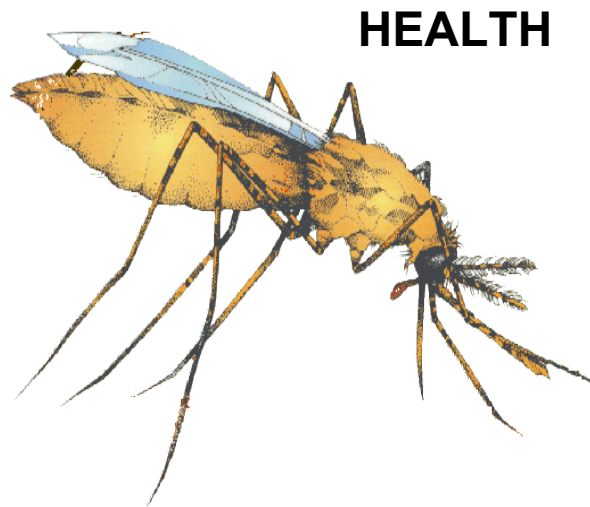
LEARN FROM HISTORY



Investments and LOSSES



LIVESTOCK



HEALTH



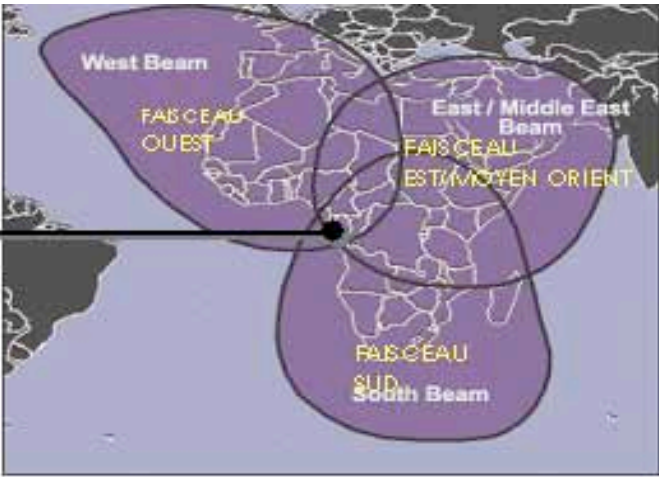
Maasai herders helping a cow to its feet. Even with the onset of the rains, there is still little fodder for livestock in some of the arid areas.

Information delivery system

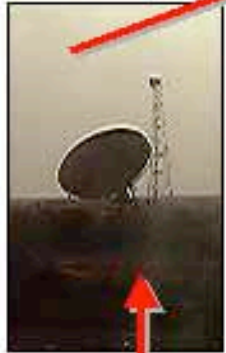
- **communication systems: Poor**
Networking of climate and application institutions
- **RANET**
- **Mobile phones**
- **Role of the media**
- **ROLES OF WMO RCOFs**
- **Community based forums; Youth, etc**



RANET : SCHEMA GENERAL



3 - SATELLITE AfriStar™



2 - STATION MONTANTE



4 - AU « C I D* » : TELECHARGEMENT ADAPTATION - RADIODIFFUSION FM et RETOUR (e-mail)



1 - SERVEUR

WEB



5 - RADIOS SOLAIRES et à MANIVELLE



* CID : Centre Communautaire Intégré d'Information pour le Développement Durable



**Climate experts and users at
Regional climate Forum**



Climate change Adaptation

ISDR; GFDRR; AfDB; ClimDev; CCAA;
UNEP;

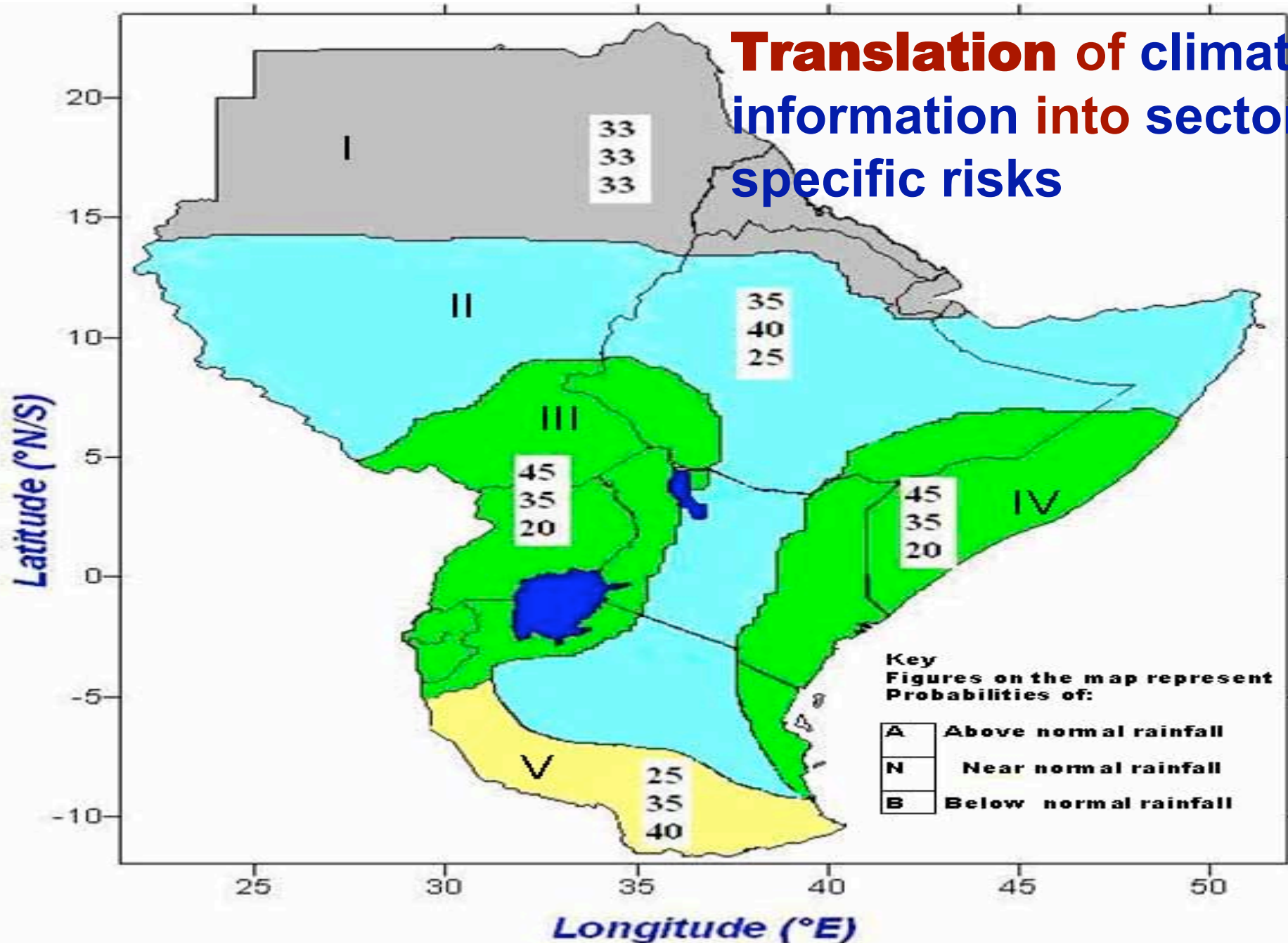
**Variability lessons in climate
change adaptation**



Capacity of sector specific experts

- **Probabilistic products**
- **No Knowledge of existence of climate information**
- **Down scaling climate to sector risk information**
- **Evidence of benefit**
- **Multi disciplinary research**

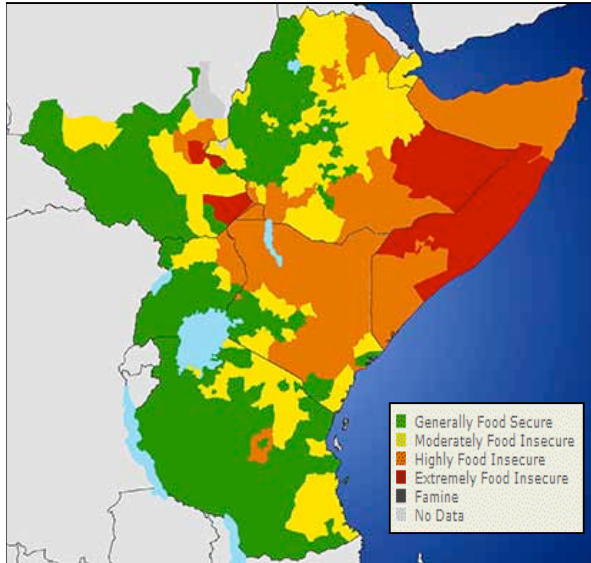
Translation of climate information into sector specific risks



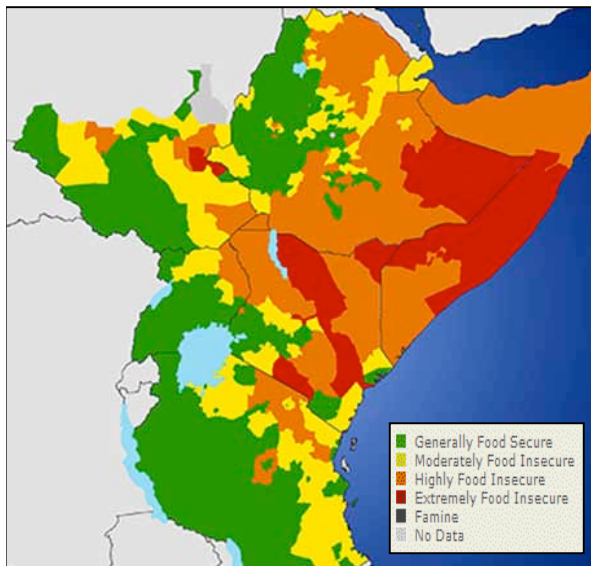
Consensus Climate Outlook: September to December 2009

2009/10 Projected Food Security Scenario's

Current: Jul. – Sept. 2009



Mid - term: Sept. - Dec. 2009?



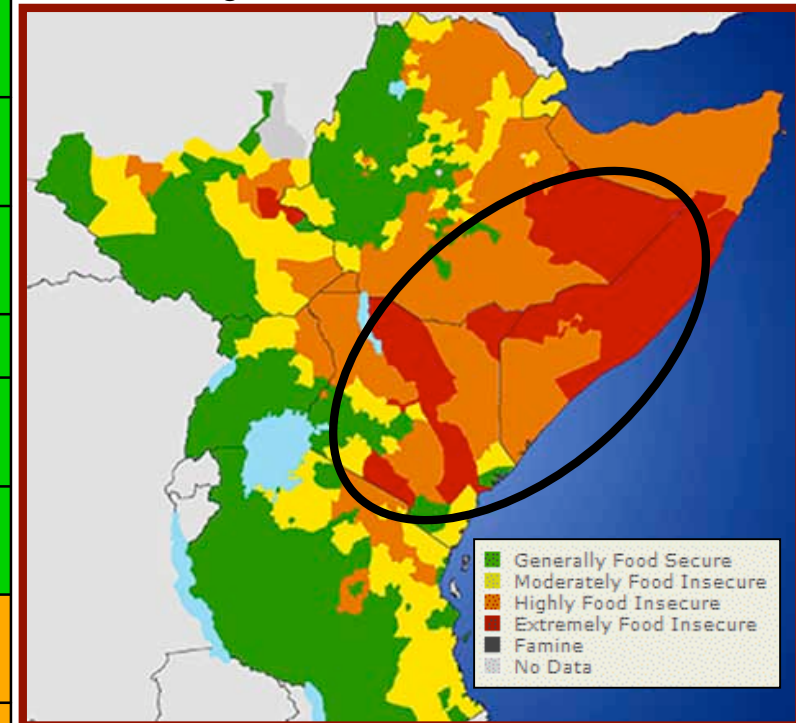
COF24 Implications : (Mainly Climatic)

1. Gradual recovery of Food Security status in marginal agric & pastoral areas.
2. Recharge of water resources & Hydro-power
3. Improving Terms of Trade in Pastoral Areas..
4. Flood risk
5. Trans-boundary Disease outbreaks (RVF) & Malaria
6. Reduced resource-based conflicts

Underlying Causes: (Mainly Non-climatic)

- A. Environmental
- B. Chronic poverty
- C. Civil war/insecurity
- D. IDP / Returnees
- E. Global recession...

Long - term: Jan. - March. 2010



○ Gradual improvement...
FEWS/NET

- **HEALTH RISK- MALARIA OUTLOOK**
- **Water resources: FLOOD/ DROUGHT RISKS**
- **HYDRO ENERGY / DAM MANAGEMENT**
- **CONFLICT (PEACE) EARLY WARNING**
- **Economic costs**
- **Other sector specific risks and integration**
- **Capacity of Sector experts**

Local Users / vulnerable communities

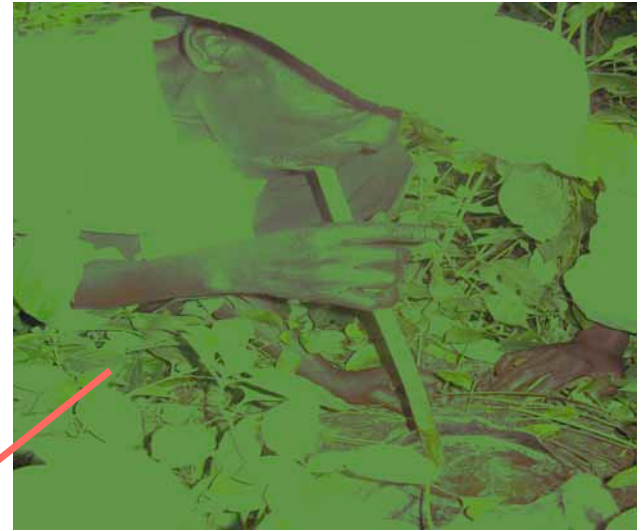
- **Poor; Illiteracy level low and no English**
- **Youth and Gender**
- **No Knowledge of existence of climate information**
- **No Evidence of value: Insurance**
- **Partnerships (Local systems for sustainability: local universities, NGOs, etc)**
- **They have IK**



**Observation
s**



**Laboratorie
s**



IK system example

FORECAST

Policy issues

- **Policy and implementations**
- **Cost benefit estimates**
- **Roles of Indigenous knowledge (IK)**
- **Education/awareness : Youth, Gender**
- **Pilot applications- Insurance for climate related events**
- **Capacity enhancement in all areas**
- **Resources availability**

Partnerships/ collaboration/ cooperation

(WMO, USAID, WB/GFDRR, AfDK, KOICA, ISDR, EU, FEWS/NET, CCAA ,DFID, IDRC, UNEP, USERS, IRI, UNEP, UNIVERSITIES, UK MET OFFICE, NGOs, Communities.....)

•Coping with current climate variability and adapting for future climate changes not an option to sustainable development

•Otherwise they will continue to re-redirect scarce resources planned for national development activities to disaster response and recovery including relief programmes

I THANK YOU ALL